



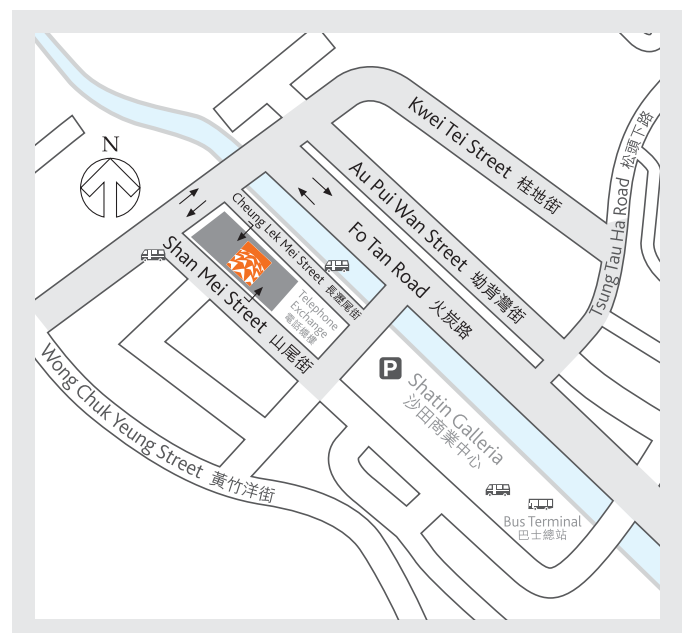
Kerry Warehouse (Shatin)

嘉里貨倉 (沙田)

36-42 Shan Mei Street, Shatin, Hong Kong
香港沙田山尾街 36-42 號

With a total gross area of over 430,000 sq.ft, we provide professional warehousing services based on maximum efficiency, security and reliability for general cargoes.

總面積逾 430,000 平方呎，儲存各類普通貨品，以快捷的辦事效率，高質素的服務水平及嚴密的保安管理，為客戶提供專業倉儲服務。

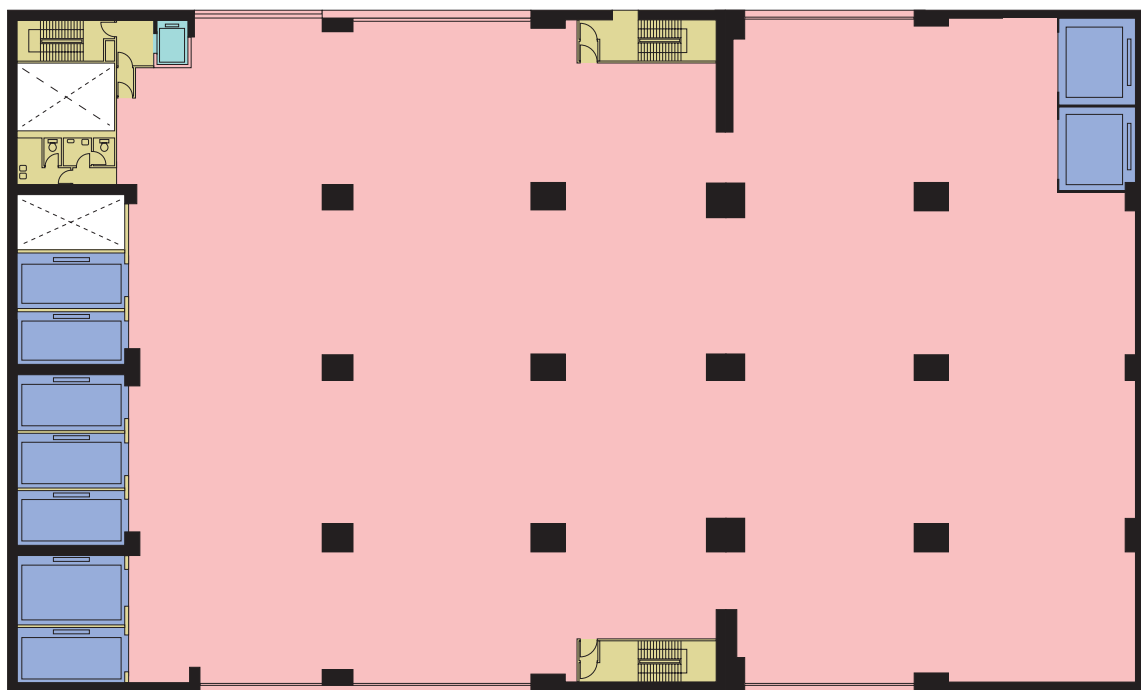


- Storage of general cargoes
- 18 storeys (including 3 levels of loading / unloading floors on G / F, UG1 / F and UG2 / F) available from approximately 28,000 sq.ft
- Ceiling height approximately 12'10" - 17'9"
- Floor loading capacity approximately 250 - 300 lbs / sf
- 64 carparks / loading spaces for 44 lorries / container trucks and 20 vans
- 9 cargo lifts (7 lifts of 5,000 kg and 2 lifts of 2,000 kg loading capacity each) serving all floors
- 1 high-speed passenger lift serving all floors
- Automatic sprinkler system on all floors
- Fire alarm system linked to nearby fire station
- Sophisticated electronic anti-burglary system
- 24-hour guard patrol
- Security alarm system linked to security control centre / police station
- Grade 1, rated by Fire Insurance Association
- 儲存各類普通貨品
- 樓高 18 層 (包括 3 層貨物起卸區) , 每層面積約 28,000 平方呎
- 樓底高度約 12'10" - 17'9"
- 樓面負重約每平方呎 250 - 300 磅
- 64 個泊車位 / 貨物起卸區供 44 部貨車 / 貨櫃車及 20 部客貨車使用
- 9 部貨運升降機直達各層 (其中 7 部各負重 5 噸 ; 另外 2 部各負重 2 噸)
- 1 部高速客運升降機直達各層
- 各層均設置自動消防花灑系統
- 火警監察系統連接鄰近消防局
- 先進電子防盜系統
- 24 小時守衛巡邏
- 保安警報系統連接保安中心 / 警局
- 為火險公會認可之 1 級貨倉

Typical Floor Plan 平面圖



Cheung Lek Mei Street 長瀝尾街



Shan Mei Street 山尾街

* Not to scale. For identification purpose only.
以上資料只供參考用。

While every care has been taken in preparing this brochure, all statements contained in the brochure are made without responsibility and no warranty whatever is given in respect of the correctness of the information contained in this brochure. None of the statements contained in this brochure is to be relied upon as a statement or representation of fact. Any interested parties shall satisfy themselves by inspection or otherwise as to the correctness of each of the statements contained in this brochure. 本書資料只供參考用。編訂過程已盡量嚴謹，然而對上述內容之全部或部份準確性，業主不作出任何保證，並不負上任何法律責任。有興趣人士如有任何疑問，應作全面了解及深入查詢。