



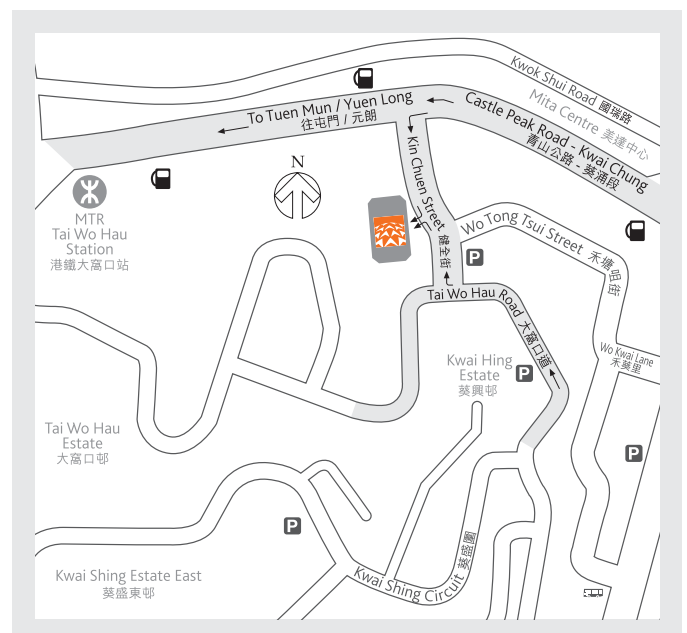
# Kerry TC Warehouse 1

## 嘉里溫控貨倉 1

3 Kin Chuen Street, Kwai Chung, Hong Kong  
香港葵涌健全街 3 號

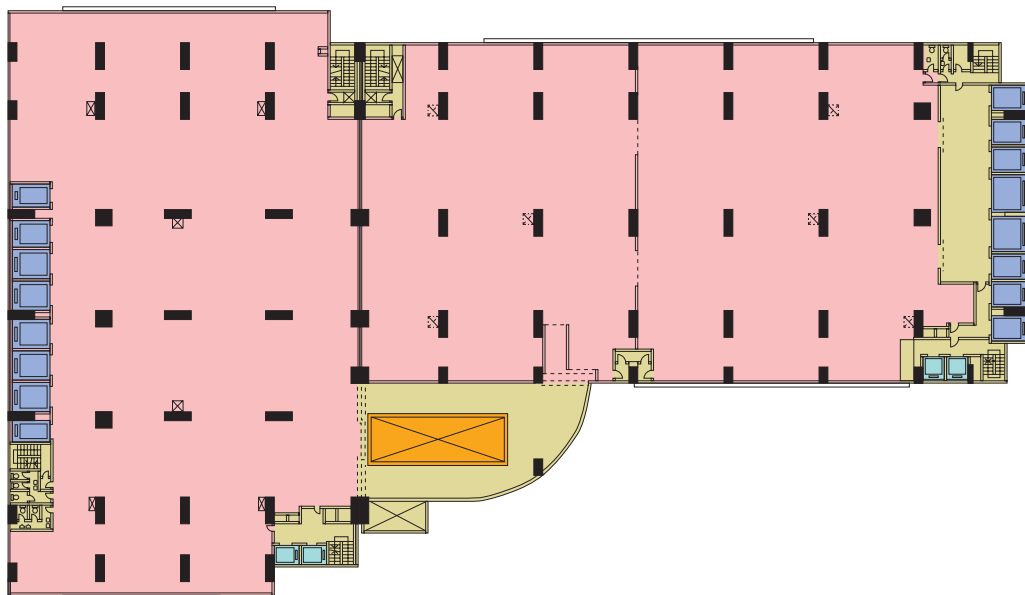
With a total gross area of approx 660,000 sq.ft, we provide professional warehousing services based on maximum efficiency, security and reliability for temperature controlled cargoes and general cargoes.

總面積約 660,000 平方呎，儲存各類恆溫貨品及普通貨品，以快捷的辦事效率，高質的服務水平及嚴密的保安管理，為客戶提供專業倉儲服務。



- Storage of Temperature Controlled Cargoes and General Cargoes
- 18 storeys twin blocks available from approximately 20,318 - 31,097 sq.ft
- Ceiling height approximately 17'9" - 23'11"
- Floor loading capacity approximately 250 - 500 lbs / sf
- 47 loading / unloading spaces for lorries and container trucks plus access to 2 container loading / unloading platforms on each floor
- 4 high-speed passenger lifts serving all floors
- 1 container hoist with lifting capacity of 32,500 kg to facilitate handling of 20', 40' and 45' containers
- 16 cargo lifts with loading capacity ranging from 2,500 to 5,000 kg each
- Automatic sprinkler system on all floors
- Dry pipe system in cold compartments
- Fire alarm system linked to nearby fire station
- Sophisticated electronic anti-burglary system
- 24-hour guard patrol
- Security alarm system linked to security control centre / police station
- Grade 1, rated by Fire Insurance Association
- 儲存各類恆溫貨品及普通貨品
- 2 幢式 18 層大廈，每層面積約 20,318 - 31,097 平方呎
- 樓底高度約 17'9" - 23'11"
- 樓面負重約每平方呎 250 - 500 磅
- 47 個貨物起卸台位供貨車及貨櫃車使用，另每層設有 2 個獨立貨櫃裝卸台
- 4 部高速客運升降機直達各層
- 1 部負重 32.5 噸之貨櫃吊機，供起卸 20 呎，40 呎及 45 呎貨櫃至各層
- 16 部貨運升降機（各負重 2.5 噸至 5 噸）
- 各層均設置自動消防花灑系統
- 凍房內安裝乾喉消防系統
- 火警監察系統連接鄰近消防局
- 先進電子防盜系統
- 24 小時守衛巡邏
- 保安警報系統連接保安中心 / 警局
- 為火險公會認可之 1 級貨倉

## Typical Floor Plan 平面圖



Kin Chuen Street 健全街

\* Not to scale. For identification purpose only.  
以上資料只供參考用。

While every care has been taken in preparing this brochure, all statements contained in the brochure are made without responsibility and no warranty whatever is given in respect of the correctness of the information contained in this brochure. None of the statements contained in this brochure is to be relied upon as a statement or representation of fact. Any interested parties shall satisfy themselves by inspection or otherwise as to the correctness of each of the statements contained in this brochure. 本書資料只供參考用。編訂過程已盡量嚴謹，然而對上述內容之全部或部份準確性，業主不作出任何保證，並不負上任何法律責任。有興趣人士如有任何疑問，應作全面了解及深入查詢。